



SMEEFFEN

Small Medium Enterprises Efficient Energy

“Raising awareness about energy efficiency in companies”

Anette Edsvik 2010

Background

- Project start aug 2008 continued t oct 2010
- Focus service company
- Earlier possibilities shows 20-40%
- Full backup from local an national entities

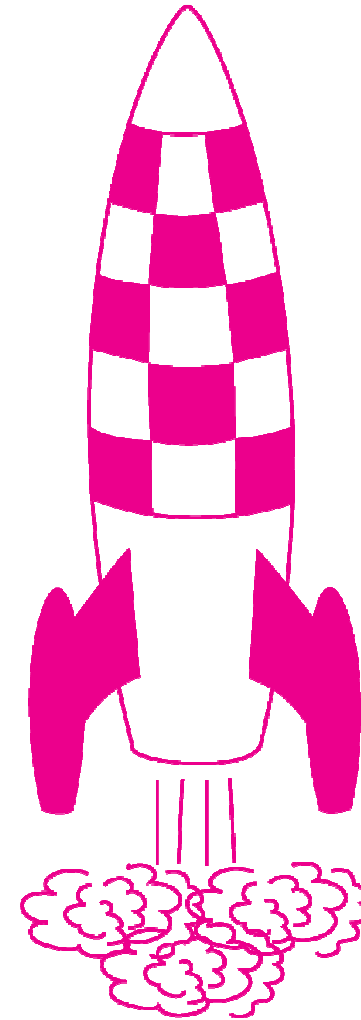
Selected target goals

- Potentials for service companies
- Develop the role Energi- climate councellors
- Creating good ambassadors



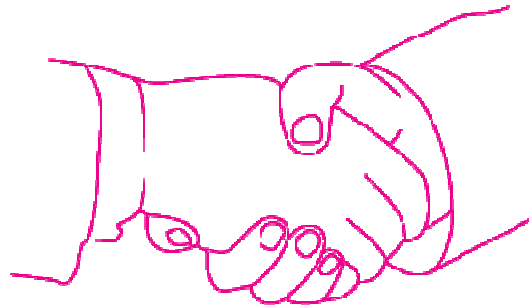
Start-up phase

- Establish networks
- Municipalities
- Energi- climate counsellor
- Invite companies
- Selection of 21 companies



Mutual commitment

SMEEFFEN



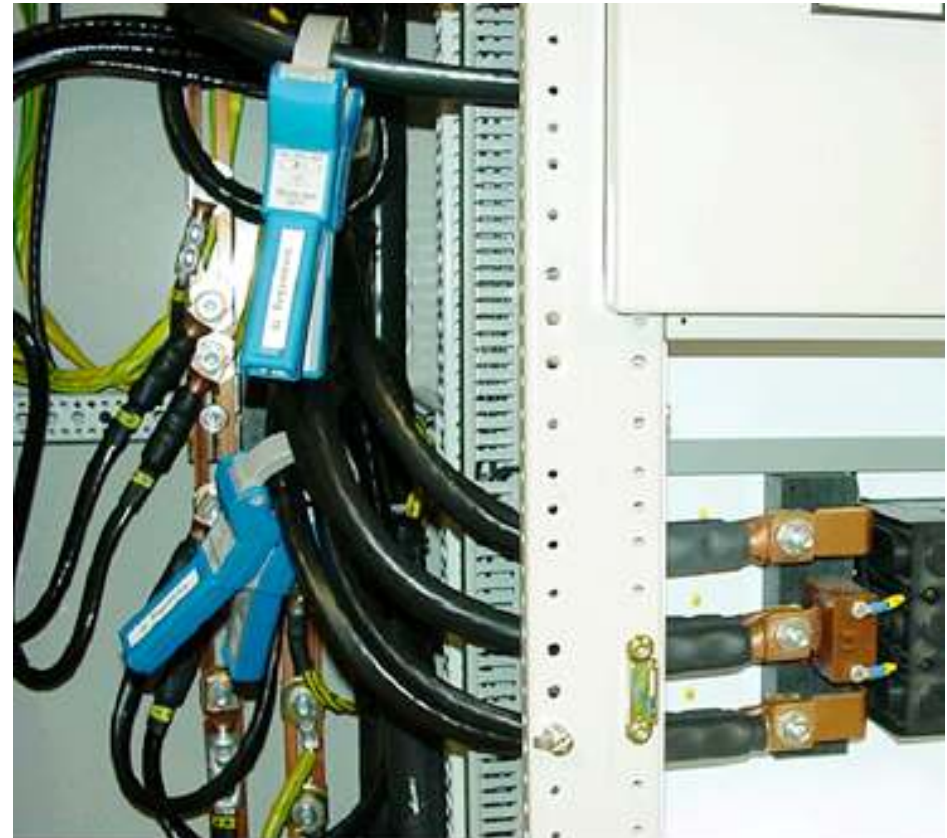
COMPANY

- Hiring of consultants
- Energi analysis
- Review
- Media
- Help to calculate payoff

- Public disclosure
- To supply relevant data
- Company Management participation
- Charges between 1000 - 2000 euro
- Media and conferences

Work in progress

- Energy statistics
- Running-time statistics
- Measurements
- Calculation
- Paper on energyanalysis
- Proposals for action



Kläppen Ski Resort



ICA Maxi - Supermarket



http://ceste78/DscToHeti/FileTemp/NN1QFOIW.HTM - Windows Internet Explorer

Östkraft AB

Vår kontaktperson: Kundservice
Fakturadatum: 20100109
Er referens: E0035075
Leveransadress: AnläggningID 735999216088454851
RINDVÄRSGATAN 88283 GÄVLE
Köpare: JOSEC STORREMARKAD AB
BUTIK 05075 10548 STOCKHOLM
Författadatum: 20100208
Leveransdatum:
Leveransperiod: 20091231 - 20091231
Betingsvillkor: Villkor vid försenad betalning

FAKTURA

Sida 1 (1)
Fakturanummer: 188189951255954
Kostnadsställe: 1111

Er ordernummer: Följesedel: Referens till ursprunglig faktura:

Artikel	Apiks	Arztal Enh.	Rab. %	Belopp
Enarg (ICA Fastighet) Portfölj till	0.0018	305301 kWh	0.00	100 790.20
Enarg (ICA Fastighet) Portfölj till	0.0028		0.00	1 520.81
El: Myrklagg				

Monogram	Exkl. moms	Belopp
	188 200.98	
Moms	25%	64 990.74
Energikatt (8.20en/Wh)		213.75
Energikatt (28.20en/Wh)		74 058.15
Att betala:		324 463.78

Länktag
100044-2030
8805954420301

Monthly invoice

€ 32 000

What was the result?

**21 companies
can save 4,6 GWh!**

**How much more
increased energy efficiency
can be obtained?**

Learningpoints



Human resources

Connecting companies

Traditional communications methods

Social and technical capability

Company Management participation

Translate energy use to money - savings

Press and Media



Thank you for listening!

SMEEFFEN
Small Medium Enterprises Efficient Energy



Gävle Dala Energikontor
Energy Agency
www.gde-kontor.se



Energimyndigheten



Region
GÄVLEBORG



LÄNSSTYRELSEN
DALARNAS LÄN